

# Bedal 37

XXX Mountain Loop Highway, Darrington, WA

FOR SALE



## Features

### THE PROPERTY

- 37 Acres of mixed hardwoods, mainly Alder with some scattered Douglas-fir and Hemlock
- Over 450 MBF of merchantable timber per seller's estimate
- Largest parcel in a subdivision of summer cabins and recreation properties
- Deeded access across neighboring parcels
- Parcel: 621000001800
- Price: \$39,900

### LOCATION/DIRECTIONS

- From Darrington proceed south on Mountain Loop Highway 16.5 miles
- Cross the North Fork Sauk River Bridge and take the first right through gate across the South Fork Sauk River and continue 0.25 miles to first left to property



## Contact

**Paul Bialkowski**

360.791.0138

paulb@gvakm.com

[www.forestland.gvakm.com](http://www.forestland.gvakm.com)

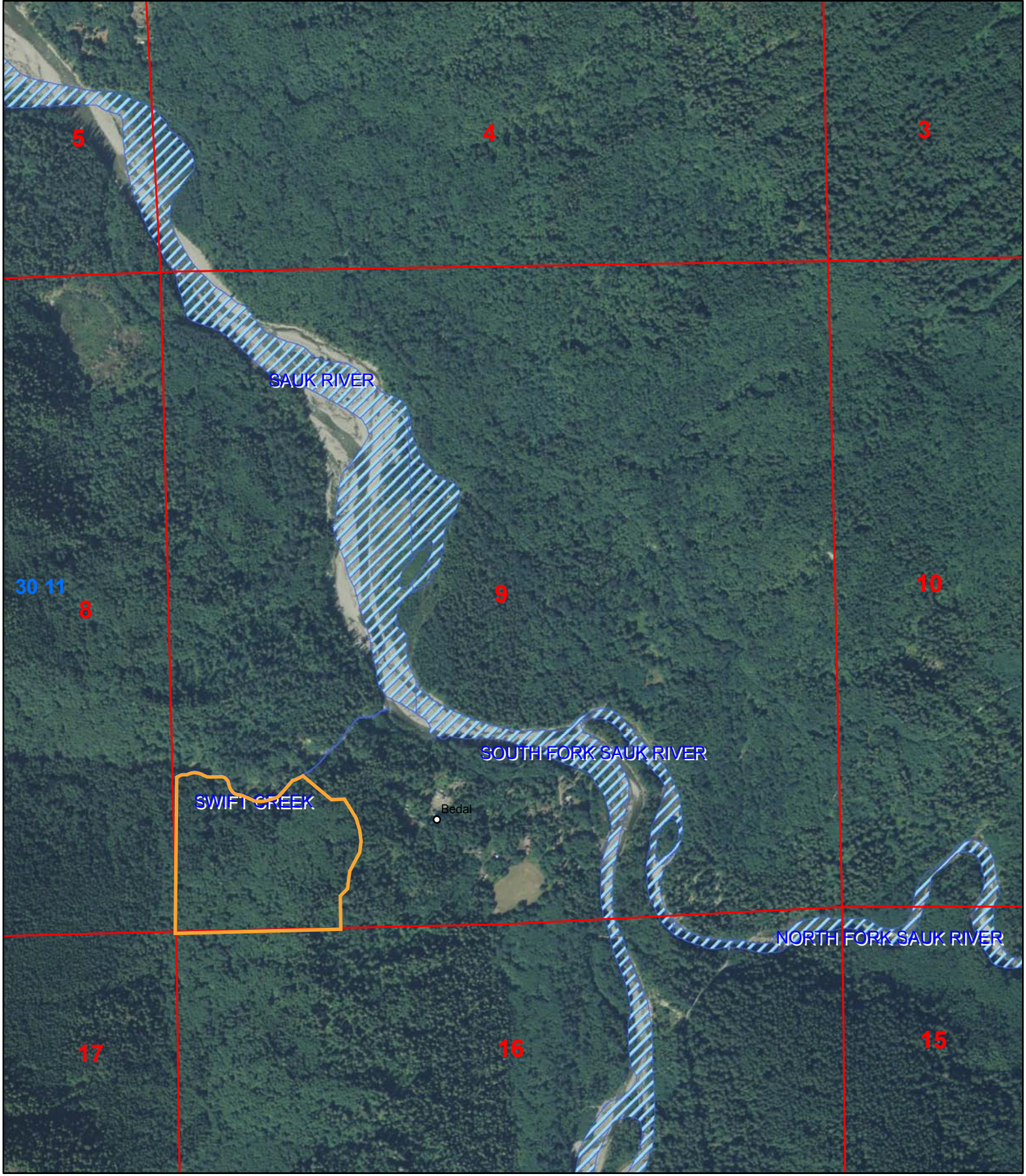


Photo Date: 2009

**Legend**

- Sections
- Townships
- County

**T30N/R11E/S9**

Snohomish County - Parcel #00621000001800



This information supplied herein is from sources we deem reliable. It is provided without any representation, warranty or guarantee, expressed or implied as to its accuracy. Prospective Buyer or Tenant should conduct an independent investigation and verification of all matters deemed to be material, including, but not limited to, statements of income and expenses. Consult your attorney, accountant, or other professional advisor.

