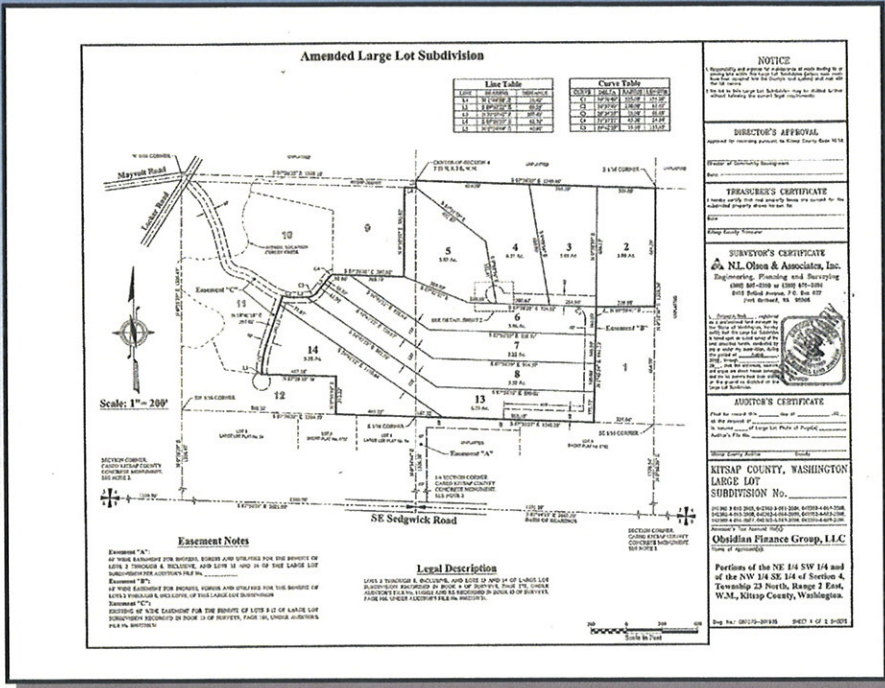


13 5-Acre Parcels in Park-Like Setting!

\$1,170,000

**XXXX SEDGWICK PLATS
PORT ORCHARD, WA**

MLS # 29085816



- ∞ Gorgeous, Park Like Setting
- ∞ Bordered on One Side by Salmon-Bearing Curley Creek
- ∞ Rises to a Large Upland Plateau with Territorial Views
- ∞ 5 Minutes to Southworth Ferry
- ∞ Mature Timber
- ∞ Build a Secluded Estate & Sell Remaining Parcels Now or in the Future

OR

Terrific Opportunity for a Builder/Developer to Create a Great Residential Neighborhood!

Find This HOME on www.JohnLScott.com/80523



For more information contact:

Terry Taylor

Real Estate Professional

Cell: (360) 731-3369

Direct: (360) 895-5350

terrytaylor@johnlscott.com

www.johnlscott.com/terrytaylor



The plat map depicted is a proposed amendment and is not the current lot design. The original lot design is available upon request.

John L. Scott
REAL ESTATE

1954 SE Lund Ave
Port Orchard, WA 98366
360-876-7600